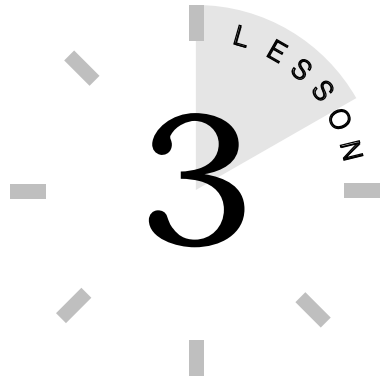


# JUMPING TO YOUR FIRST WEB SITE



*In this lesson, you learn how to visit a Web site, view your session history, and read an URL.*

## VISITING WEB SITES

Once you start Netscape Navigator, you're ready to start browsing Web pages. There are three easy ways to jump to Web sites by using Netscape Navigator 4.0:

- Typing a Web address into Navigator's Open Page dialog box.
- Typing the address into the Location/Netsite/Go To text box in the Navigator window.
- Clicking links found on a Web page.

When using the Open Page dialog box or the Location text box, you need to know the address of the Web site you want to visit. Every page on the Web has an address, called an *URL* (Uniform Resource Locator). A typical URL may look similar to `http://www.mcp.com`.



**URL** Uniform Resource Locator (most often pronounced "Earl") is the standard address that indicates the location of a page or resource on the Web or Internet universally. This location can be a computer two states or two continents away.

An URL consists of two parts. The first, the *content identifier*, indicates the type of protocol or language of the source you're connecting to. In the preceding example, `http://` (Hypertext Transport Protocol) is the protocol used for most Web pages. If you are using Navigator to FTP files or perform a gopher search, you must type in a different content identifier. Navigator supports `ftp://`, `gopher://`, `telnet://`, and `news://` protocols.

The second part of the URL identifies the location of the Web page. In the example, `www.mcp.com`, the Web page happens to be the site for Macmillan Computer Publishing (*mcp*), this book's publisher. The `www` prefix indicates the Web-managing portion of the Macmillan computer server, and the extension `.com` indicates the server is used for commercial purposes. You will also see other types of extensions, such as `.gov` (government), `.net` (Internet networks), and `.edu` (education).

Additional slashes added to an address simply designate the exact path of the Web page in its location on the server, for example, `http://www.mcp.com/que/new_users/new.html`. This path includes directories and subdirectories where the `new.html` Web document is found. URLs can take you to a company's home page or specify an exact file to display. URLs are very case-sensitive; therefore, you must be careful when typing in upper- and lowercase letters.



**URL Shortcuts** You don't always have to type in the entire Web address. For example, if the URL is **`www.company.com`**, you can just type **`company`**. Navigator will add the **`www`** and **`com`** parts to the address for you.



**Server** A server is usually a large, fast computer connected to the Internet and holds an enormous amount of data. When you connect to a server, you can look through the data and download files onto your computer.



**Where Can I Find Web Addresses?** Computer magazines and Internet newsgroups are good sources for finding interesting Web addresses to visit. Check out Internet-related publications, such as *The Net*, *Net Guide*, and *Internet World*. You can also find Web pages by using a search engine, which you'll learn to do in Lesson 6, "Searching for Web Sites."

## USING THE OPEN PAGE DIALOG BOX

The Open Page dialog box enables you to jump to a new site on the Web. Follow these steps to summon the dialog box and connect to a Web site:

1. Open the File menu and choose Open Page. The Open Page dialog box appears (see Figure 3.1).

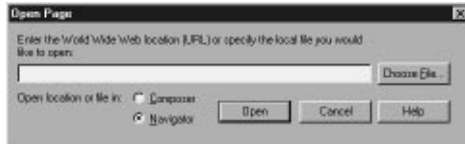


FIGURE 3.1 The Open Page dialog box.

2. Type the Web address you want to jump to in the text box (make sure the browser option is selected). For example, type the following URL to go to the home page of the White House:

`http://www.whitehouse.gov`



**Skip the Prefix!** You don't have to type the **http://** prefix every time you use an URL. Navigator 4.0 automatically examines the text you type and knows whether it's a Web page address and acts accordingly.

3. Click the Open button or press Enter. In a few seconds, the White House home page appears on-screen (see Figure 3.2).



FIGURE 3.2 The White House home page.

## USING NAVIGATOR'S LOCATION BOX TO JUMP TO A WEB PAGE

If you prefer not to use the Open Page dialog box to type Web addresses, you can easily type addresses directly into the Location text box in the Navigator window.

Depending on what you're doing in Navigator, the Location text box name changes. When you click inside the box and start typing the URL, the box name changes to *Go To*. When you're viewing or working on a page, the name appears as *Netsite* or *Location*.

To type directly into the Location text box, follow these steps:

1. Click inside the Location text box and select the text, as shown in Figure 3.3.



FIGURE 3.3 You can also enter Web addresses directly into the Location text box.

2. Press Delete to clear the text.
3. Type the new URL you want to use and then press Enter. For example, type the following URL to go to the White House home page: <http://www.whitehouse.gov/>

## USING LINKS TO JUMP TO OTHER WEB PAGES

The third way to visit other Web sites is to click links. Links are shortcuts to other Web pages. You don't have to type an address; just click the link. Figure 3.4 shows a typical Web page link.

Links typically take the form of highlighted or underlined text. However, links can also be icons, graphics, and pictures. To preview where a link will take you, simply point to the link and look on the status bar to view the link's address.

The links you view with Navigator appear as blue text. After selecting a link, the color turns a reddish-purple. The color change helps you keep track of links you have followed.

## WEB PAGE PROBLEMS

Web pages are not permanent fixtures on the Internet. People move, change, and delete them from their servers. You may also experience trouble when downloading Web pages during high traffic periods of the day. Here are some common problems you will come across when trying to view Web pages:

- Server busy—If you're trying to view a popular page, there may be too many people attempting to connect at the same time. Some pages limit how many people can

log on at a given time. The heaviest Web traffic occurs during business hours, 9-5. When you come across a busy server, try again at another time (preferably at night or early morning).

- **Page won't load**—Some Web pages you attempt to view just will not load. Either they become stuck or the page doesn't load completely. You'll recognize an incomplete page when you see one—its text is jumbled. When this happens, click the Reload button. If the page seems stuck, click the Stop button and then try downloading the page again.
- **Link fails**—Sometimes when you click a link, you get an error message, such as File Not Found. It is likely the page has been moved to another location. You can try adjusting the address by removing the file name or the subdirectories and then retracing the link from the home page. For example, if the address is `http://www.mcp.com/que/new_users/new.html`, try deleting `/que/new_users/new.html`.
- **Error messages**—If you try to connect to a Web page and get the message: Netscape Unable to Locate the Server or The Server Does Not Have a DNS Entry, double-check the address you typed and make sure it's accurate. (The connection may be faulty and you may have to disconnect and redial the modem.) Also, recheck the address if you get the message Document Contains No Data. If the connection still doesn't work, try removing the subdirectories and connecting to the home page.
- **Unrecognized file type or Unknown file type**—Some Web pages may contain unique file types, such as a sound or video clip, that Navigator doesn't recognize. When this happens, Navigator alerts you that no program configured exists to handle the file. Choose the Cancel button in the alert box. Later in this book, you learn how to add plug-ins to Navigator for viewing unique file types.

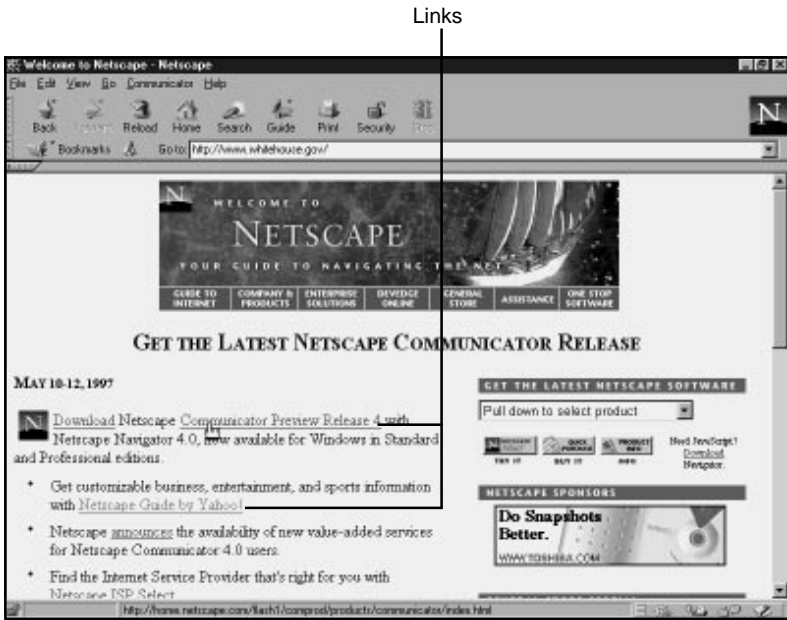


FIGURE 3.4 You'll find links on most of the Web pages you visit.

## NAVIGATING WITH BACK AND FORWARD

Once you begin to view several Web pages, Navigator keeps track of where you've been and the pages you have viewed; this is called a *history*. You can use the Back and Forward toolbar buttons to navigate between the Web pages you've downloaded.

The Back icon returns you to the previous page. The Forward icon takes you forward one page. You cannot go back or forward until you have viewed several pages. If you still have the White House home page on your Navigator screen from the previous steps, follow the next steps to practice using the Back and Forward icons:



**Which Page Was I On?** If you become confused about which page you were viewing, you can hover the mouse pointer over the **Back** or **Forward** button and a tip box will display the page title. Click and hold the button to see a list of pages you have viewed. You can select a specific page from the list without continuously clicking the Back or Forward button to locate a page.

1. From the White House home page, use the vertical scroll bar (on the right side of the screen) to scroll down below the White House picture and click the Electronic Guest Book link. This takes you to the Guest Book page.
2. Click the Back icon to return to the White House home page.
3. Now click the Forward icon to go back to the Guest Book page. You may scroll down, sign your name in the guest book, and leave a message for the President.



**Quickly Going Back or Forward** A quick way to move back or forward through Web pages is to use your right mouse button. On the current Web page, click your right mouse button to open a small dialog box (Mac users should hold down the mouse button). Choose **Back** to go back to the previous page. Choose **Forward** to go forward.



**I Want to Go Home!** The Home icon returns you to Navigator's default home page. Click the **Home** icon to return to Navigator's designated default home page.

In this lesson, you learned how to use URLs, jump to Web sites, and use the Back and Forward navigational icons. In the next lesson, you learn how to navigate a Web page and use links.